

PRO MAX

YUKTI RAJ



9001:2015

Model:- Yukti 578 (32 Trays)



CE

CERTIFIED

**1
YEAR
WARRANTY**

**FREE
SHIPPING**



12x7 SUPPORT

**201
STAINLESS
STEEL**

DURABLE & SAFE – BUILT TO LAST

**201
STAINLESS
STEEL**

- Full Stainless Steel Construction •
- Wear-Resistant & Corrosion-Proof •
- Safe Heating •



YUKTIRAJ

**STAINLESS
STEEL
201**



**Steering Wheel
Convenient To Move**



**Drawer Shelf
Design**



**Heat Resistant
Handles**



OUR MACHINE

- ✓ Better Drying Performance
- ✓ Double Layer Outershell
- ✓ Heat Protection
- ✓ Low Power Consumption
- ✓ Low Sound Bearing Motor



OTHER MACHINE

- ✗ Bad Drying Effect
- ✗ One Layer Outershell
- ✗ High Heat Loss
- ✗ High Power Consumption
- ✗ High Sound Motor

V/S

INNOVATIVE VERTICAL DESIGN

- Professional Commercial Dryer •
- 32-Layer Ultra-Large Capacity •
- Optimized for Businesses •



DRAWER STYLE SHELF

Catering To A Wider Variety Of Ingredients.
It Can Include A Whole Item.



SMART TOUCHSCREEN CONTROL PANEL

- Easy Touch Controls •
- User-Friendly for All Ages •
- Modern & Smart Technology •





LARGE VISUALIZATION WINDOW WITH LIGHT INSIDE

Watch Food Dynamics Anytime.



INDEPENDENT DISPLAY & LAYER CONTROL

Each Layer's Temperature And Time Can Be Controlled Separately.
Does Not Stink.



← Fruits

← Veggies

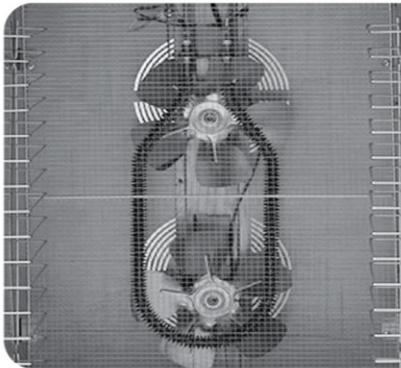
PRODUCT DETAILS

YUKTIRAJ



Heavy-Duty Support Tray

Strong and durable
High load-bearing capacity



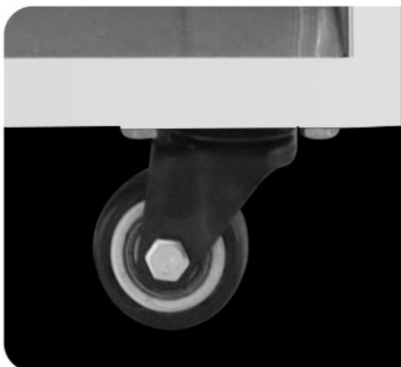
Hot Air Circulation Fan

Comfortable handling
Sleek and stylish design



Ventilation Holes

Efficient heat dissipation
Extends machine lifespan



Universal Swivel Wheels

Built-in base wheels for easy movement

VERSATILE DRYING – ONE MACHINE HANDLES IT ALL

Customizable Time & Temperature

Perfect settings for every ingredient

Set & Forget Convenience

No need to monitor constantly

24-Hour Timer

Hands-free drying, effortless operation



POWERFUL FUNCTIONS ENHANCED PERFORMANCE

Innovative Drying Performance, Fully Versatile
One Machine Outperforms Multiple Devices



**90°C High
Temperature
Drying**



**304 Stainless
Steel Mesh Trays**



**Double-Layer
Steel**



**Layered
Design**



**Variable
Frequency
Drying**



**Smart
Temperature
Control**

Our Drying Machine



Double-Layer Stainless Steel

Durable & Rust-Resistant
Retains Heat Efficiently for Better Drying



Mesh Grid

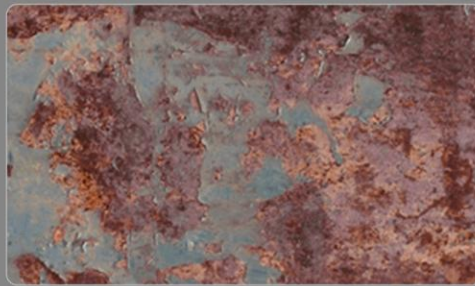
400×400
Balanced size for even drying



With Built-in Light

Explosion-Proof Light
Clear Visibility

Ordinary Drying Machine



Single-Layer Galvanized Iron

Prone to Corrosion & Rust
Less Heat Retention



Mesh Grid

480×380
May impact airflow and drying consistency



Without Light

Frequent opening to check can extend
drying time and cause heat loss

Our Drying Machine



Smart Touch Control Panel

Sleek, durable, and less prone to damage
Lightning-proof, moisture-resistant,
and long-lasting



Mesh Grid

Upgraded Stainless Steel Edged Mesh
Easy to clean, prevents hand scratches

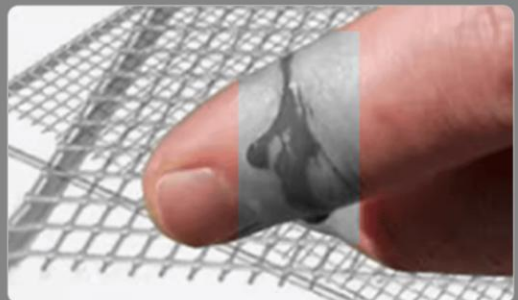


Ordinary Drying Machine



Old Mechanical Control Panel

Less refined, harder to operate
Lacks Modern Features



Mesh Grid

Old Spot-Welded Mesh
No edge protection, harder to clean,
easy to scratch hands



CORE INTELLIGENT CHIP

SMARTER AND MORE EFFICIENT



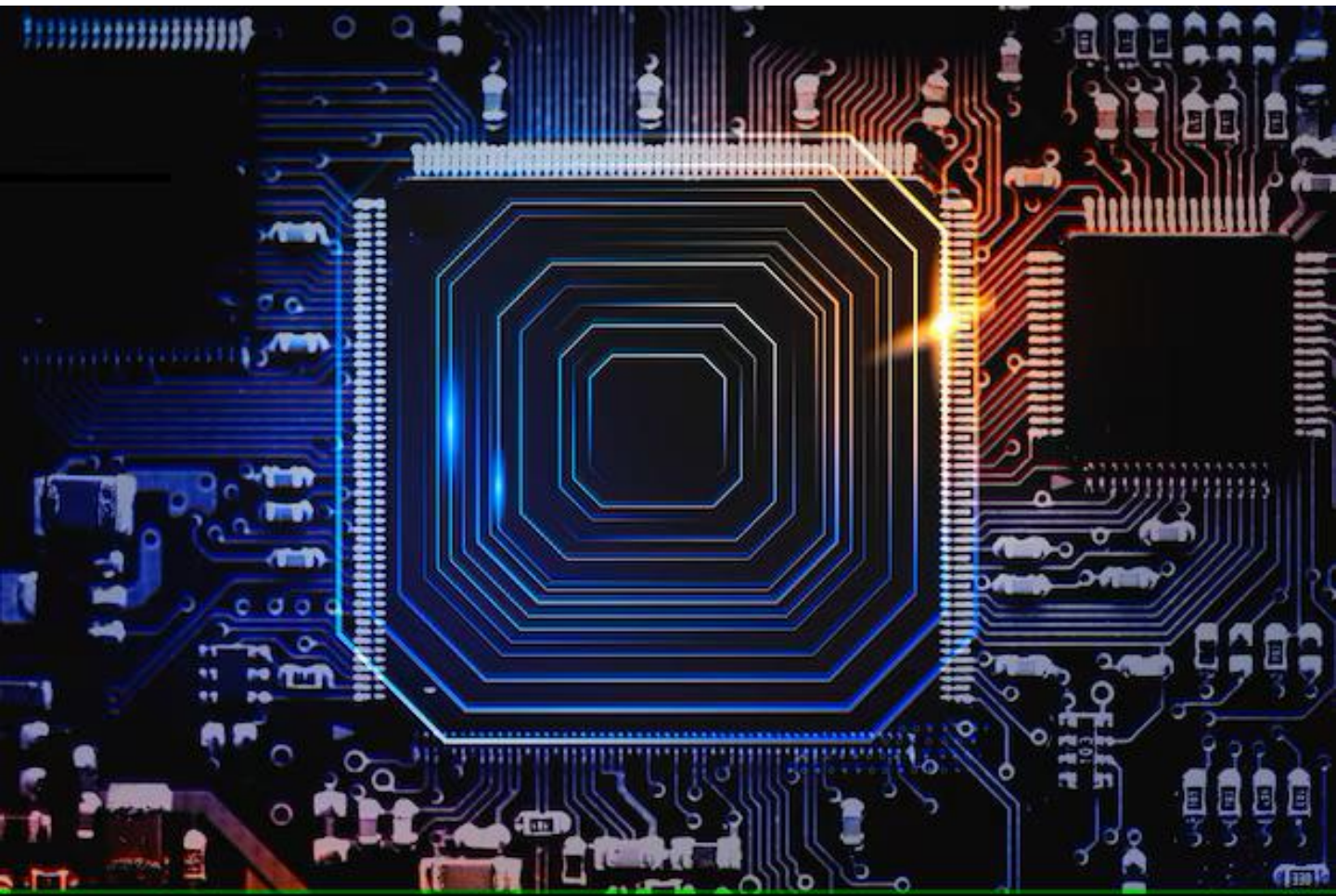
TIME SETTING RANGE

ADJUSTABLE TIME RANGING
FROM 30 MINS - 24 HOURS



TEMPERATURE
SETTING RANGE

ADJUSTABLE TIME RANGING
FROM 30°C - 90°C





**Pure
Copper
Winded**

**4 LOW NOISE
HYBRID MOTOR**

CONSTANT TEMPERATURE OPERATION

Heater Shuts Down After Reaching Set Temperature That Saves A Lot of Power.

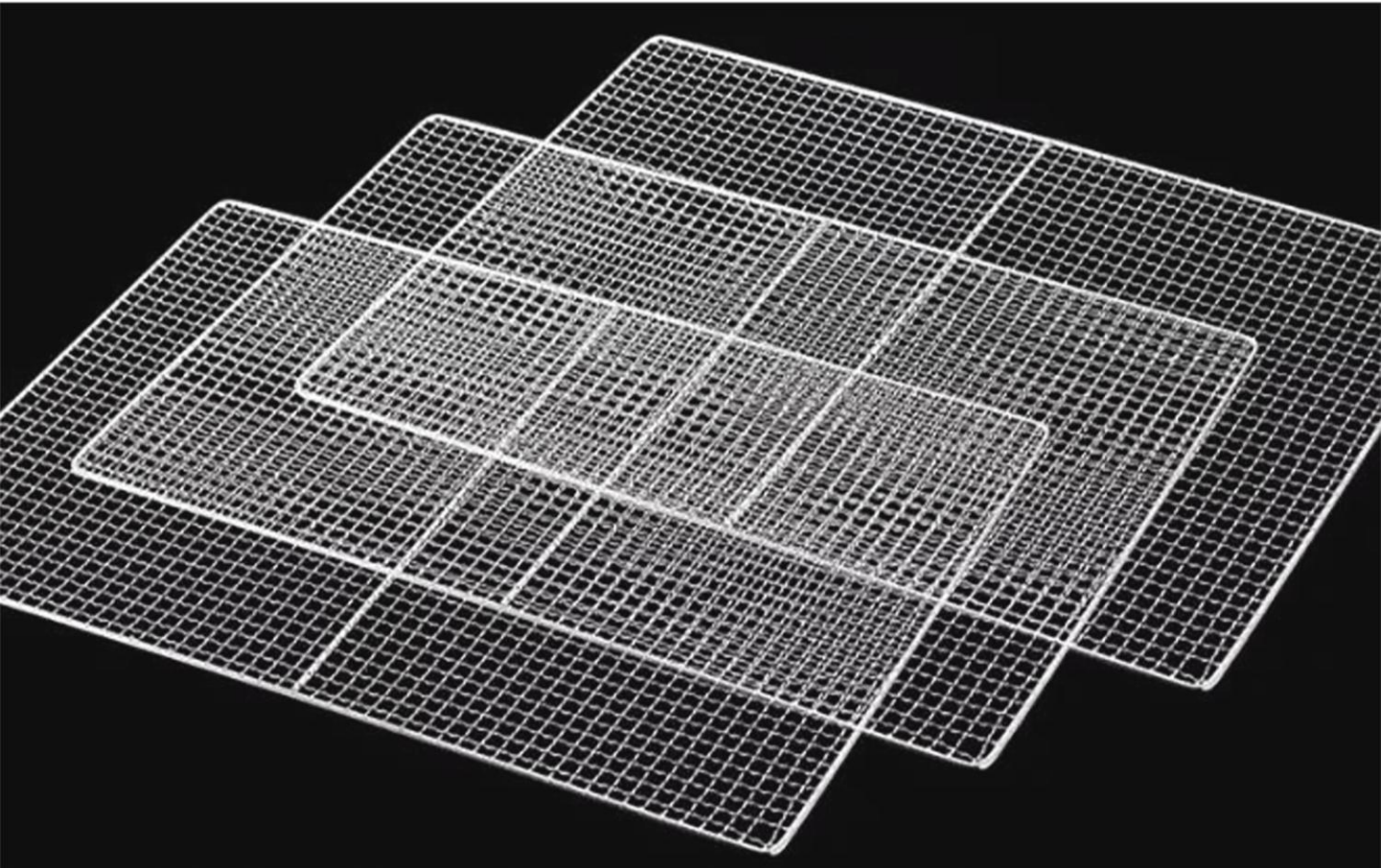


Not Affected By Humidity Changes In
Moisture Levels In The Air Do Not Impact Its
Properties, Performance, Or Structure.



FOOD GRADE 304 STAINLESS STEEL SHELF

**Strong Bearing Capacity, Corrosion Resistance,
Duarable & Healthier, Safe According To
National Food Standards**



**304
STAINLESS
STEEL**

YUKTIRAJ

SIMULATED NATURAL DRYING

PRESERVES NATURAL COLOR AND FLAVOR

- **Inspired by Natural Air Drying & Sun Drying** •
- **Machine Drying Replaces Sunlight While Preserving Original Flavor & Nutrients** •

● Our Drying Machine

After Starting, the Temperature Gradually Rises & Stabilizes After a Few Hours



**Dried Lemon Slices Look Great & Tasty
Vibrant Color, Dry Yet Moist**

● Old Model Drying Machine

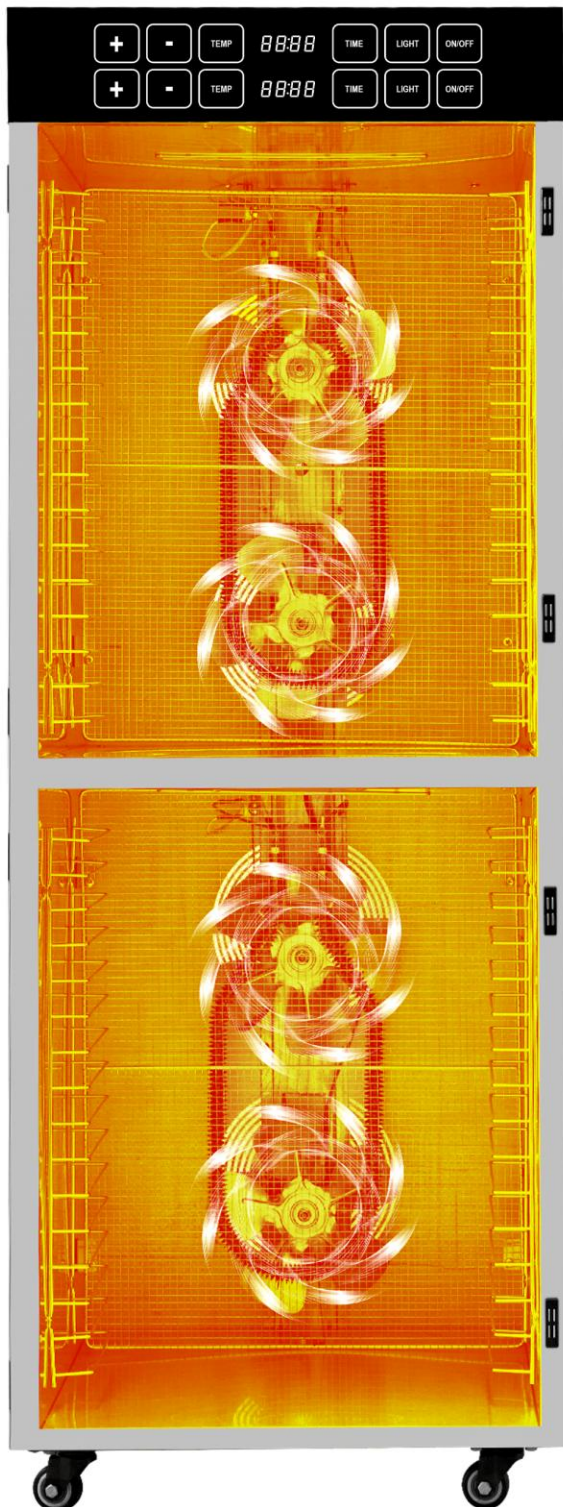
Unstable Temperature Fluctuations, Prone to Overcooking



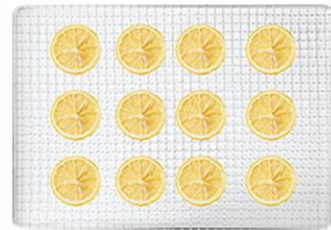
**Dried Lemon Slices Completely Burnt
Overheated & Charred, Black and Dry**

UPGRADED DUAL-FAN SYSTEM

- **360° 3D Circulating Drying** – Ensures even heat distribution
 - **No Need to Flip Food** – Consistent drying on all layers
 - **Fast Moisture Removal** – Prevents souring and spoilage

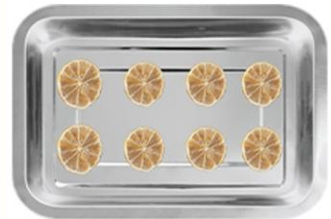


UPGRADED AUTOMATIC ROTATION TECHNOLOGY



UPGRADED MODEL

Even Heating for Every Piece
No Manual Flipping Needed
Seamless Drying Experience



ORDINARY MODEL

Uneven Heating
Risk of Burning
Requires Manual Flipping

YUKTIRAJ

Why are we best for dehydrators?



01

We Offer 365 Days Non Stop Customer Phone Support

02

One-Year All Machine Warranty

03

10 Years Spare Part Available No Worry About Part Fail

04

Free Of Cost Home Delivery With Express Shipping

05

Dedicated Online Troubleshooting System That Helps You Fix The Problem

06

100% Major Damage Replacement Free Of Cost

07

For Bigger Machines 10mm EPE Foam And 15mm Plywood Packing

08

All Machines Made With High Quality Core Part Are Durable And Reliable

09

Strict Quality Control System For Every Machine Tested Ok

10

Yuktiraj Is A Brand And Brands Never Want To Lose Their Reputation

11

Yuktiraj Is CE, ISO, ROHS, Certified Company Working Since 2019

12

“Quality First, Fast Support, Price Last” Is Our Business Vision

Application



Dehydrated vegetables



Dried Fungus



Dried fruit



Scented tea



Herbal medicine



Chilli



Fish



Pet food



Chips





Fruit



Meat



Vegetable



Nut



Spices



Medicinal Herb



Seafood



Pet food



Flower



Tea Leaf



Funaus



Fish







Specification:-

Model:- Yukti 578. **Control:-** Digital Touch. **Temperature Range:-** 30-90c. **Tray Count:-** 32+2. **Tray Size:-**40x40cm. **Tray Made With:-** 304 Food-Grade Steel. **Tray Type:-** 5x5mm Hole Mesh Trays (If You Need Solid Plain Trays Then You Can Buy Extra). **Airflow System:-** 360-degree forced Air Conversion. **Timer:-** 30 Minutes To 24 Hours. **Made Material:-** 201 Stainless Steel. **Noise Level:-**50 Db. **Dimensions:-** 46.0*56.5*124.5cm. **Grid Spacing:-** 3cm **Weight:-** 40kg. **Voltage:-** 220v 50mhz. **Power:-** 3120 watts. **Power Consumption Per Hour:-** 3.1 Unit. **Drying Space:-** 55.11 Square Feet. **Capacity:-** 32-35kg (Actually Depends On Material) **Warranty:-** 1 Year. **Support:-** Online. **Shipping:-** All India Free. **Damage Policy:-** Major Damage 100 % Free Of Cost Replacement.

**Price:- 88900 ₹ + 16002 ₹ 18%
GST Total Payable 104902 ₹.**



Scan code to open link

Read More This Machine Visit Below Link:-

इस मशीन अधिक जानकारी के लीये नीचे के लिंक को विजिट करे

<https://www.yuktirajdehydrator.com/Commercial-food-fruit-and-vegetable-dehydrator.php>



YUKTIRAJ PVT LTD

ISO, CE, ROHS, Certified Indian Company

SEND AN INQUIRY



Yuktiraj Pvt. Ltd,

Raje Sambhaji Nagar Kinhi Road Bypass

Karanja Lad District: Washim

State: Maharashtra Pin: 444105



Call & WhatsApp Us

9588688034



official@topsell.in



Google Map
Location Click
Here

Thank you always with you



www.yuktirajdehydrator.com

Terms And Conditions :- <https://www.topsell.in/tc>